



US 20020140644A1

(19) **United States**(12) **Patent Application Publication****Sato et al.**(10) **Pub. No.: US 2002/0140644 A1**(43) **Pub. Date:****Oct. 3, 2002**(54) **DISPLAY MODULE****Publication Classification**

(76) Inventors: **Toshihiro Sato**, Mobara (JP);
Yoshiyuki Kaneko, Hachioji (JP);
Yoshiro Mikami, Hitachioota (JP);
Takayuki Ouchi, Hitachi (JP)

Correspondence Address:
ANTONELLI TERRY STOUT AND KRAUS
SUITE 1800
1300 NORTH SEVENTEENTH STREET
ARLINGTON, VA 22209

(21) Appl. No.: **10/105,273**(22) Filed: **Mar. 26, 2002**(30) **Foreign Application Priority Data**

Mar. 28, 2001 (JP) 2001-092851

(51) **Int. Cl.⁷** **G09G 3/30**(52) **U.S. Cl.** **345/76**(57) **ABSTRACT**

An organic light emitting diode (OLED) display module is provided wherein the aperture ratio of the respective pixels thereof improves and such display faults as line defect is prevented so as to allow image to be displayed with high quality.

The display module is provided with a capacitor, a first terminal of which is connected to an output terminal of the first transistor as selected by the scanning line and a second terminal of which is connected to the gate placed anterior thereto, wherein the electric current is supplied to an organic emitting device in response to the data signal as supplied from the data line through the second transistor, which turns into on-state condition when the first transistor is put into an off-state condition, and as stored in the capacitor.

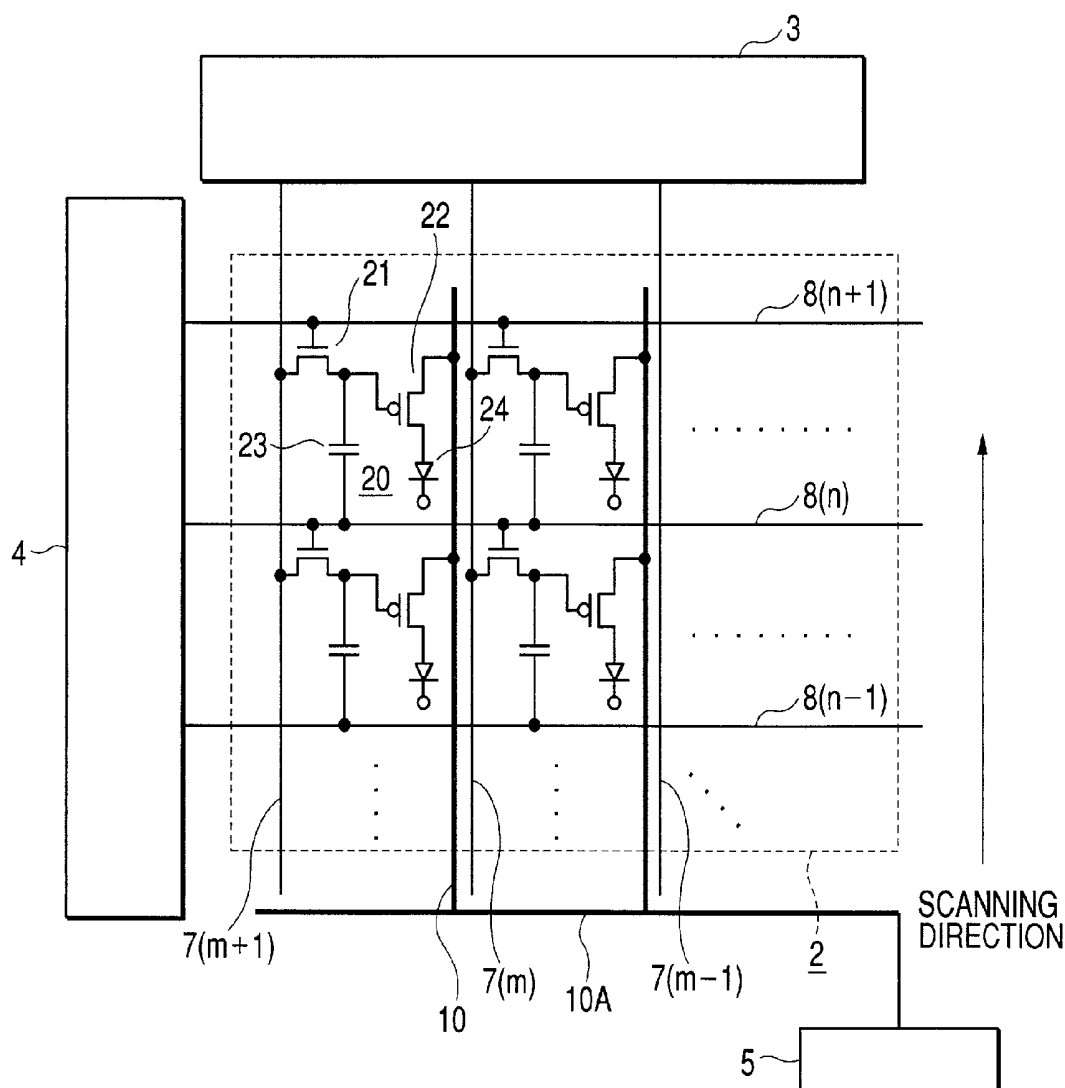


FIG. 1

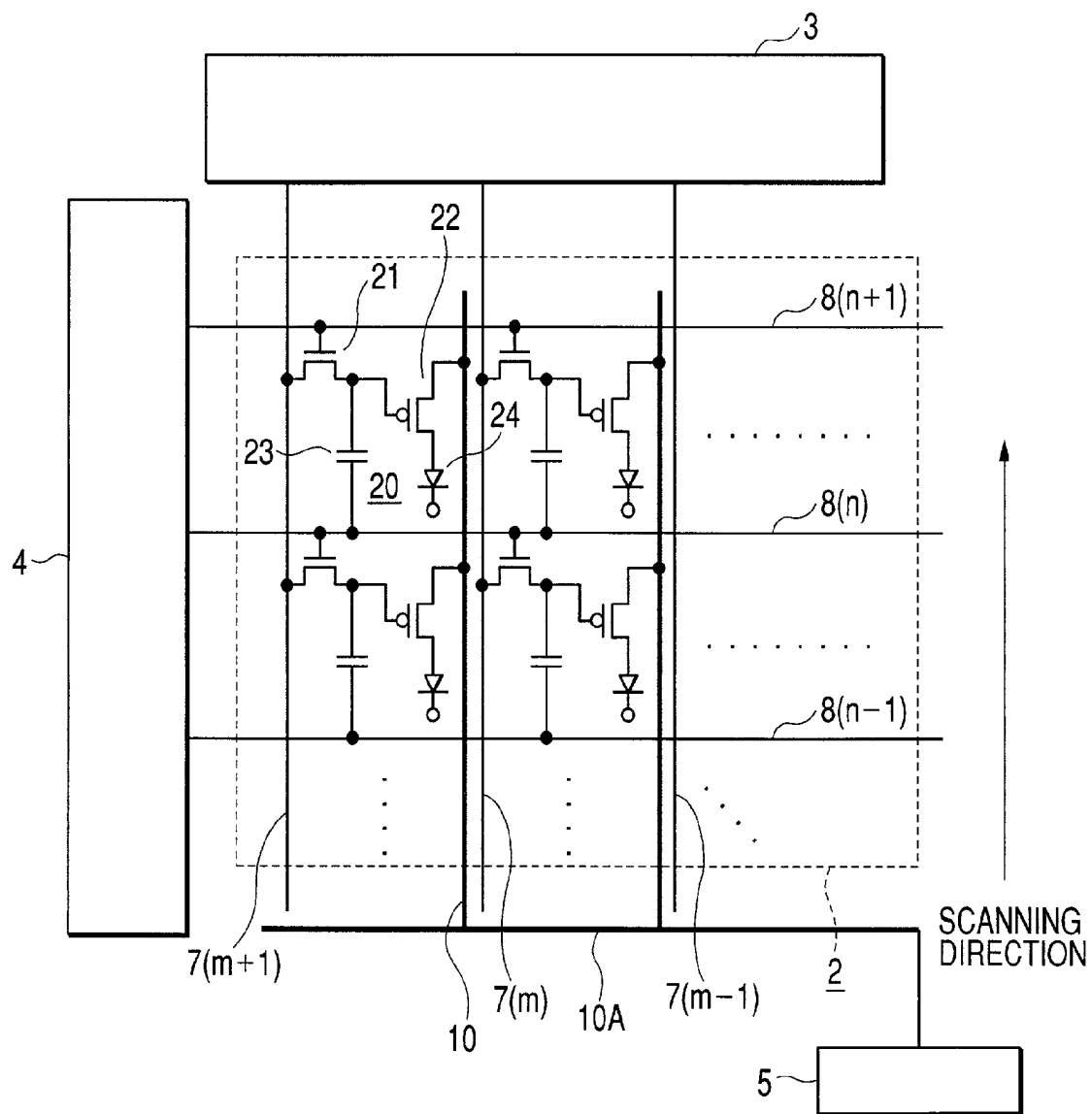


FIG. 2

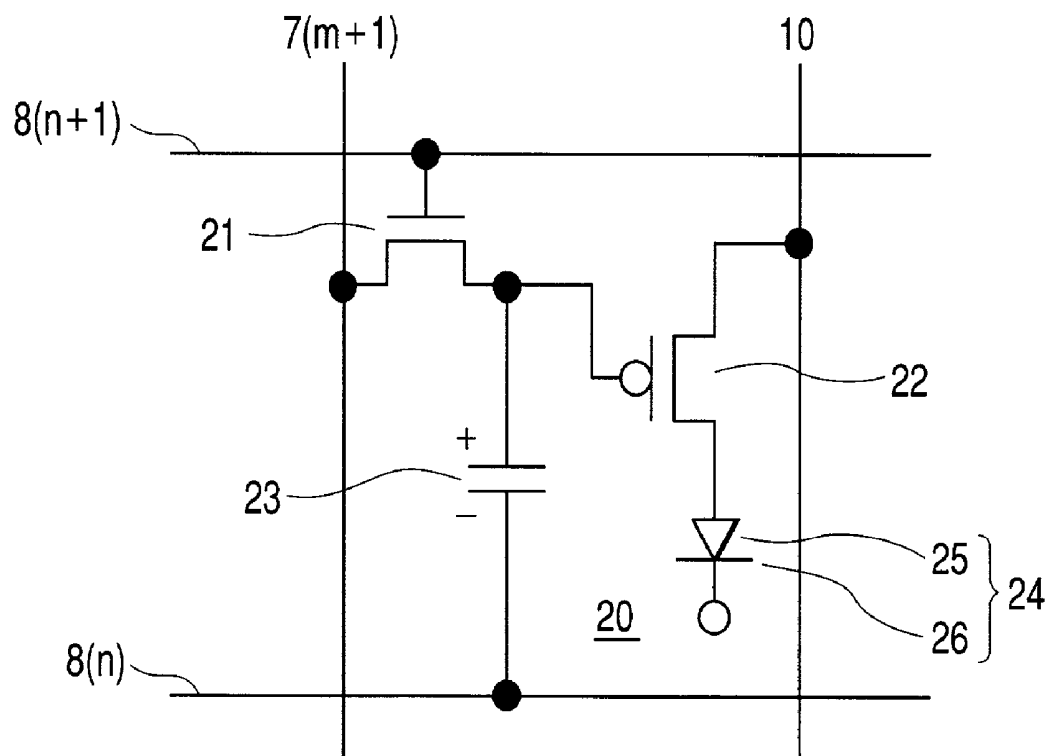


FIG. 3

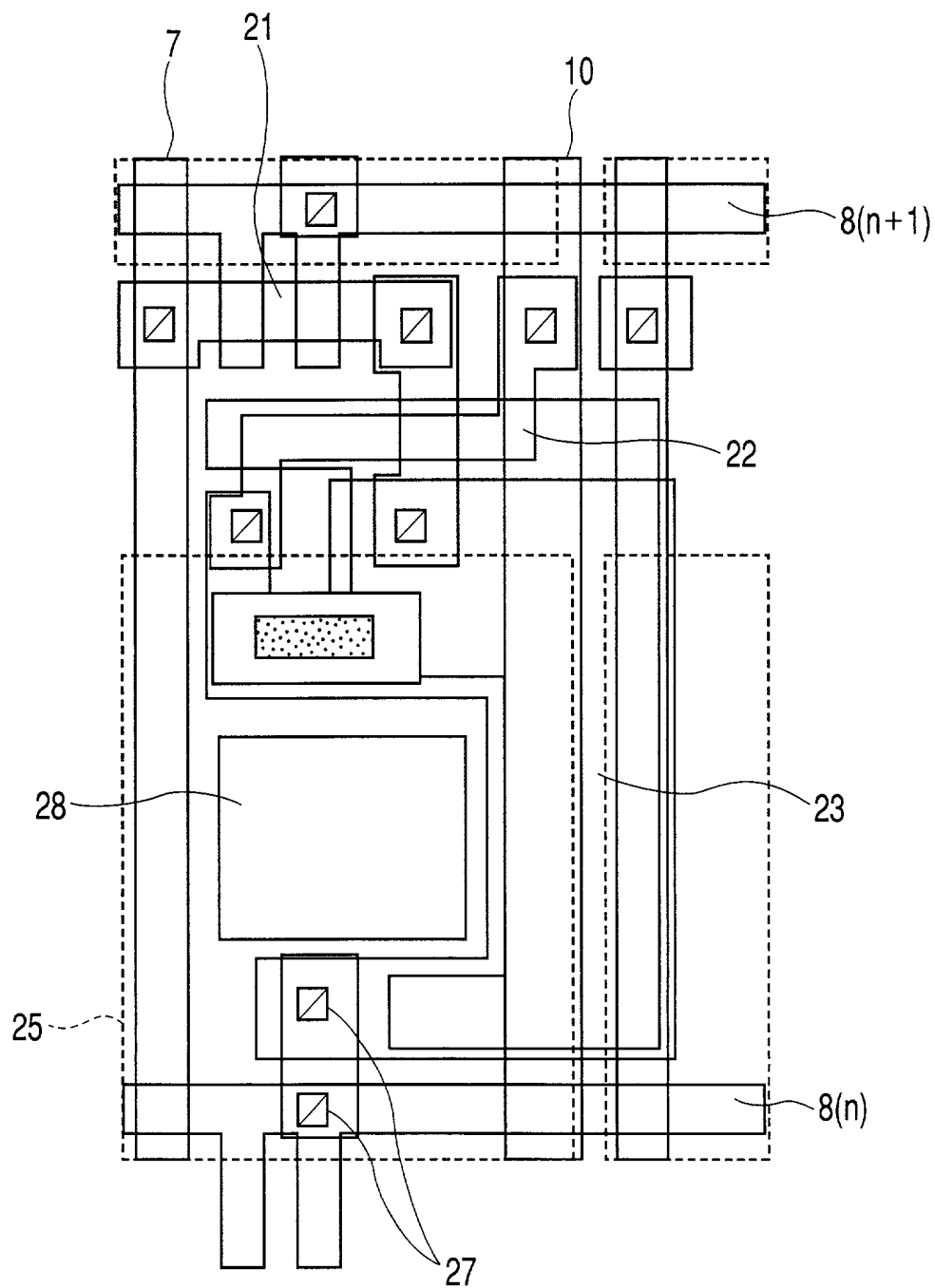


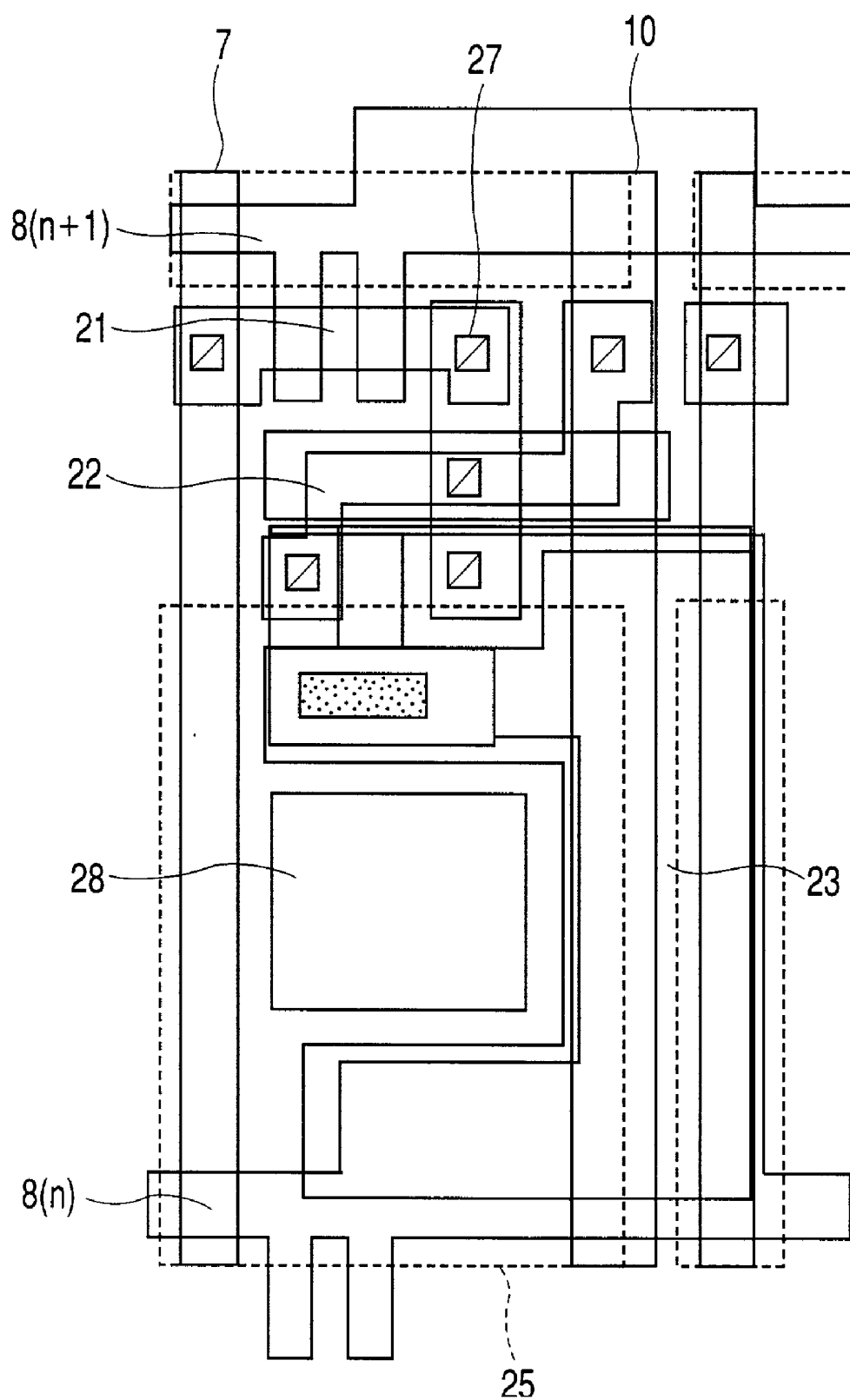
FIG. 4

FIG. 5(A)

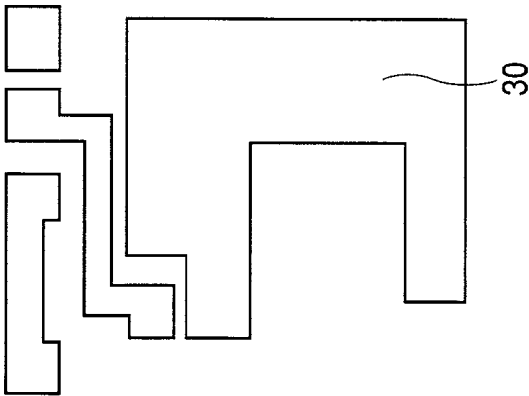


FIG. 5(B)

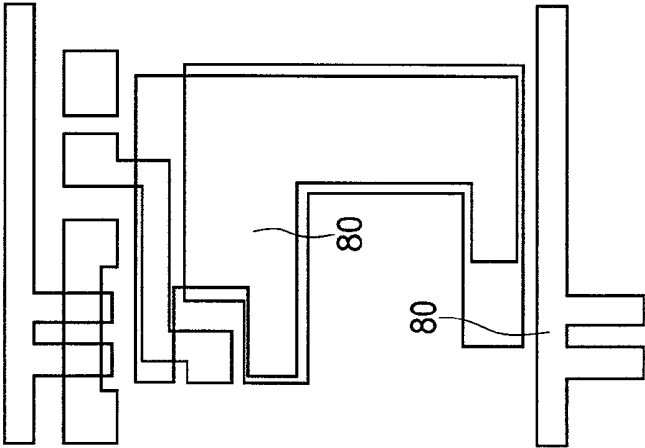


FIG. 5(C)

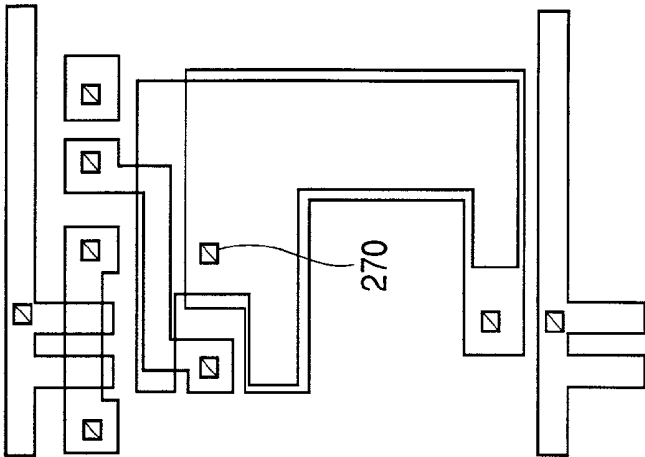


FIG. 6(F)

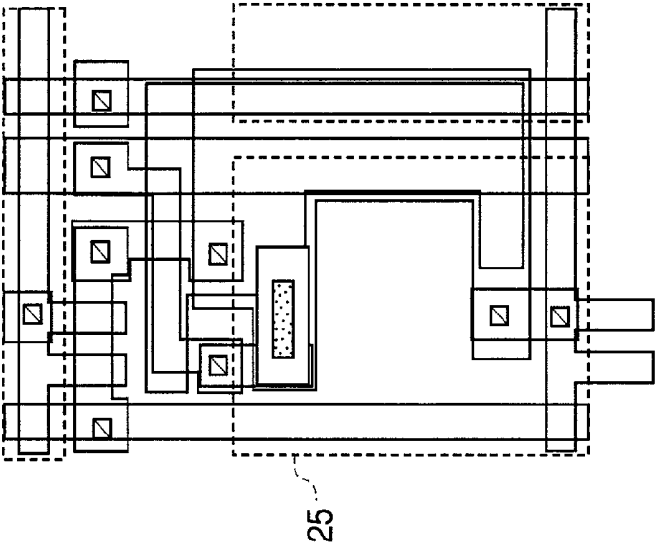


FIG. 6(E)

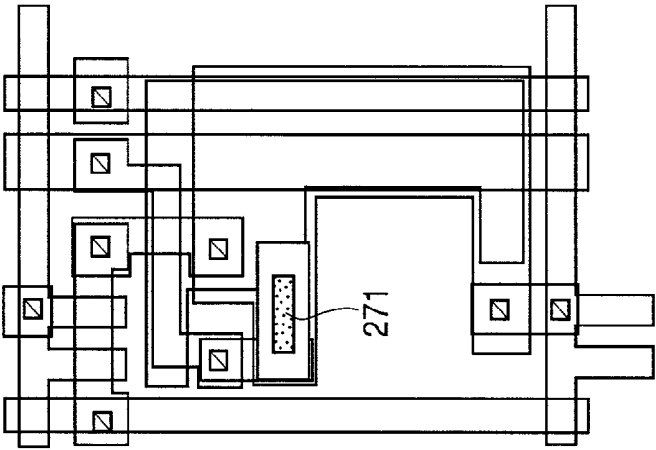


FIG. 6(D)

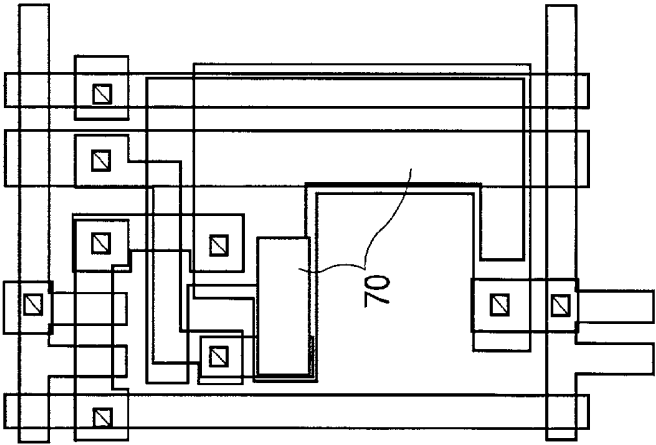


FIG. 7(I)

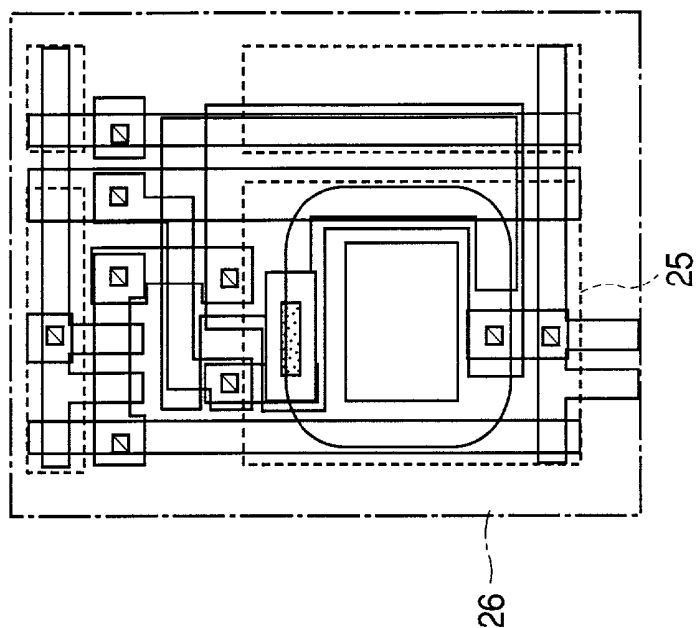


FIG. 7(H)

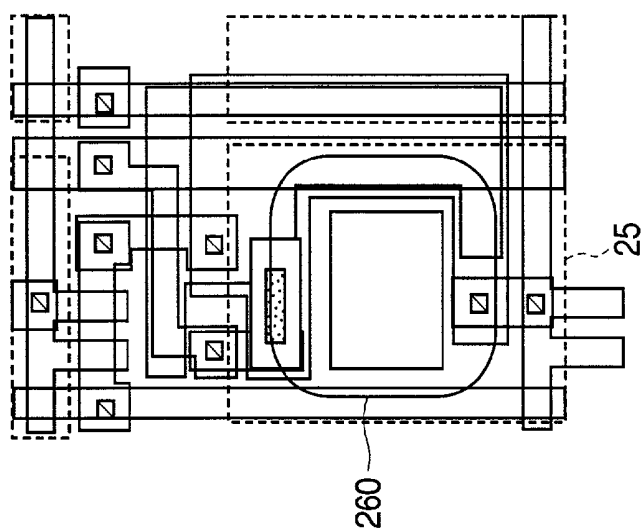


FIG. 7(G)

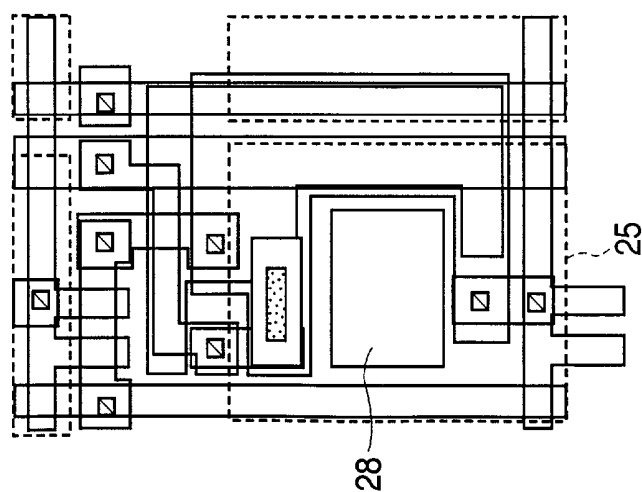
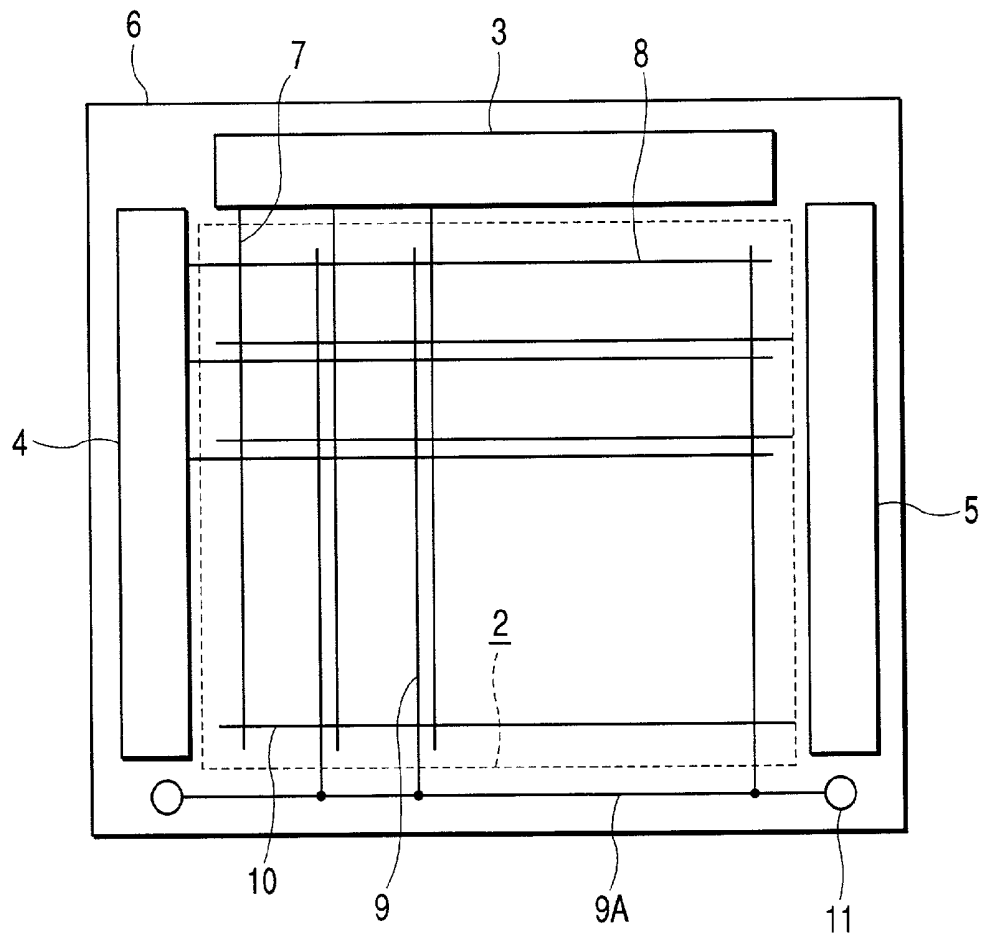


FIG. 8

1 DISPLAY MODULE



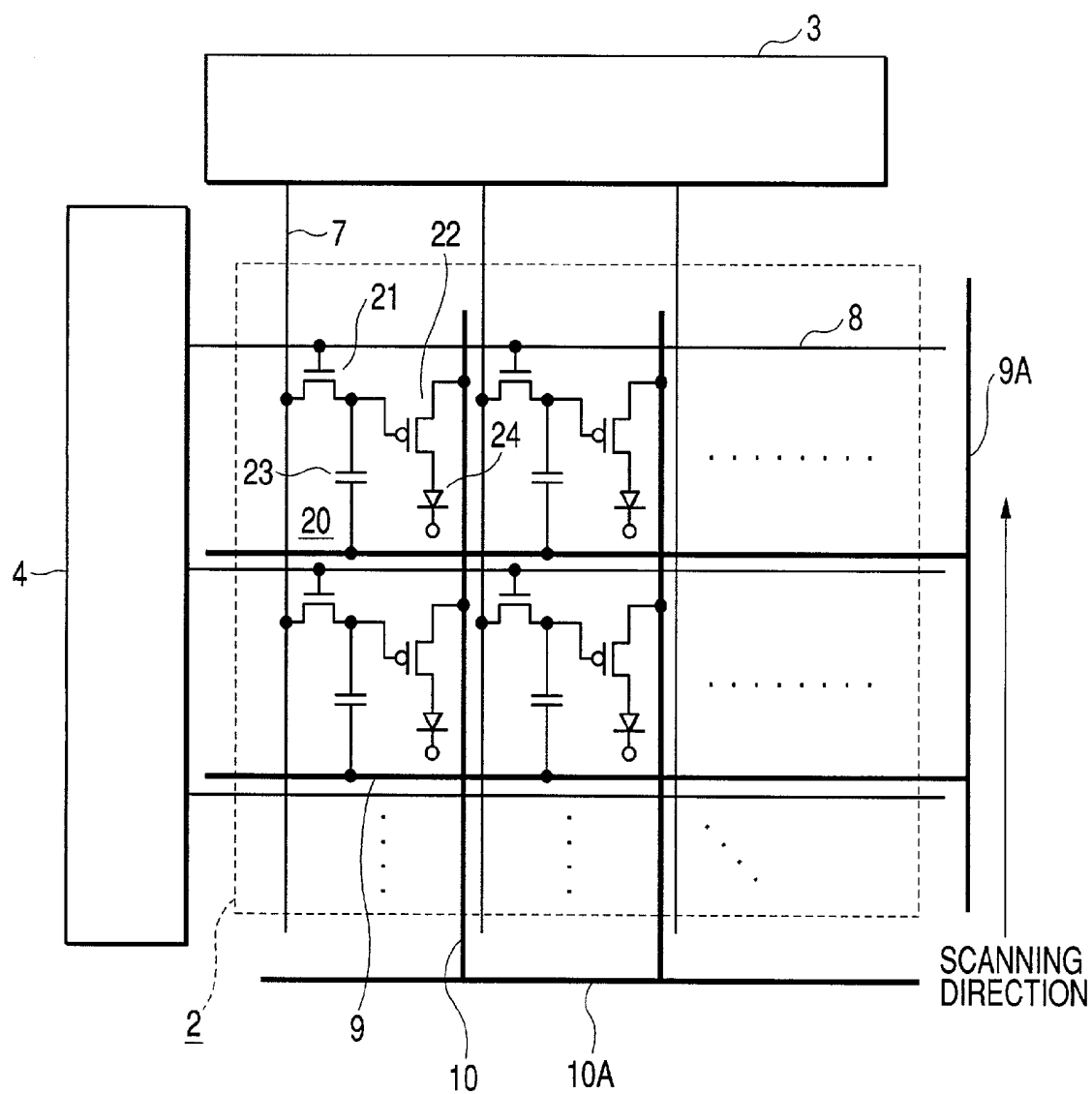
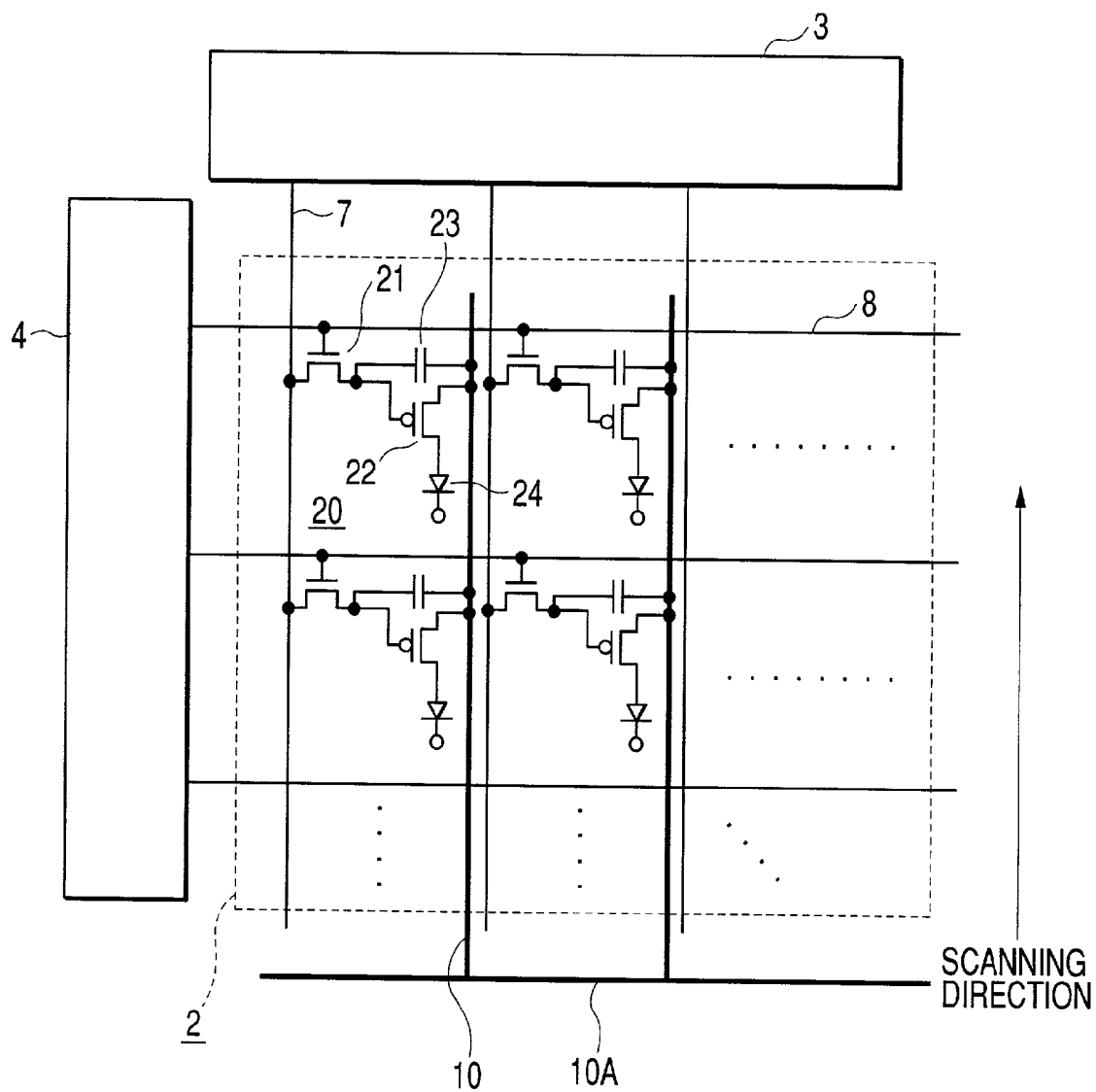


FIG. 10



DISPLAY MODULE

FIELD OF THE INVENTION

[0001] The present invention relates to an active matrix display module, especially, pertaining to such display module as being provided with pixels comprising such emitting devices as an EL (electro luminescence) device or a LED (light emitting diode) wherein light is emitted by conducting electric current through such an emitting layer as an organic semiconductor thin film and with pixels circuits to control the emitting operation of those pixels.

BACKGROUND OF THE INVENTION

[0002] Recently, the advent of advanced information network system in our modern life increases the demand for personal computers, car navigation systems, portable remote terminals and communication network equipment or the combined products thereof. For such products as mentioned above, such a display device as being thin in thickness, light in weight and of lower power consumption is suitable so that a liquid crystal display or a display module incorporating such electrooptic devices as a self-luminous EL device or LED therein are in practical use.

[0003] The latter display module is characterized in being good at visibility, possessed with wide viewing angle and being suitable for motion display due to its high response, which module is said to especially opt for image display. In particular, a display incorporating an organic EL device (also referred to as an organic LED device; hereinafter, referred to as OLED in abbreviation, where appropriate), the emitting layer of which device is made from organic matter, is highly expectable in accordance with the greater improvement of the luminous efficiency thereof and the progress of the network technology that enhances the feasibility of image communication. The OLED display is of diode structure in which an organic emitting layer is interposed between two pieces of electrodes.

[0004] As described below, the active matrix driving method in which thin film transistors (hereinafter, referred to as TFT where appropriate) serve as the switching devices of pixels is effective for enhancing the power efficiency of such OLED display as mentioned above. The operation of the OLED display by the active matrix deriving method in the prior arts is disclosed in the Japanese Patent Application Laid-open No. HEI 4-328791 and 8-241048 or the U.S. Pat. No. 5,550,066, for instances, the driving voltage of which display is disclosed in the International Publication No. WO98/36407 and so forth.

[0005] The typical pixel structure of the OLED display comprises two TFTs equivalent to a first active device and a second active device, the first of which is a switching transistor while the second of which is a driver transistor, and a pixel driving circuit (hereinafter, referred to as a pixel circuit where appropriate) comprising one storage capacitance for a data signal storage device, which pixel circuit controls the emitting luminance of the OLED display. The pixels are disposed at the respective intersections of a matrix in which the data lines having M in number to which data signals (or image signals) are supplied and the scanning lines (hereinafter, referred to as gate lines where appropriate) having N in number are aligned in the arrangement of N lines×M rows.

[0006] To drive the pixels, the scanning signals (gate signals) are subsequently supplied to the gate lines having N in number so as to put the switching transistors into on-state condition, and one time of the vertical scanning operation is over within one frame period of T_f so as to freshly supply the on-state voltage to the first gate line.

[0007] In the above driving method, the time required for supplying the on-state voltage to one gate line is defined as T_f/N or below. Generally, the value of the one frame period of T_f is in the order of $1/60$ second in practical use. During the on-state voltage is supplied to a certain gate line, all the switching transistors that are connected to the corresponding data line are put into on-state condition, in synchronization with which the data voltage (image voltage) is simultaneously or subsequently supplied to the data lines having M rows in number, which arrangement is general in the active matrix liquid crystal display.

[0008] The data voltage, during the on-state voltage is supplied to the gate line, is stored in storage capacitance (capacitor) so as to be maintained substantially as it is during the one frame period. The voltage value of the storage capacitance regulates the gate voltage of the driver transistor.

[0009] Accordingly, the value of the current flowing through the driver transistor is controlled so as to put the light emission of the OLED under control. The response time for the OLED to begin emitting light upon the application of voltage thereto normally takes one is or below so that it manages to follow the motion image of quick tempo.

[0010] The active matrix driving method realizes high efficient operation by performing light emission over the one frame period. The difference with the passive matrix driving method, in which the respective electrodes of the OLED diode are directly connected to the scanning line and the data line without the provision of any TFTs, is clear as follows.

[0011] In the passive matrix driving method, the current flows through the OLED only during the short period when the scanning line is selected, so that emitting luminance corresponding to practically several times as many as the number of the scanning lines is required for obtaining the same luminance as that of the one frame period of the active matrix driving method with the light emission performed during such short period as mentioned above. Thus, it is unavoidable that the driving voltage and current in use enlarge, which causes large loss of power consumption such as heating so as to deteriorate power efficiency.

[0012] In view of the foregoing, it is found that the active matrix driving method is superior to the passive one in light of the reduction of power consumption.

SUMMARY OF THE INVENTION

[0013] The active matrix driving O-LED display module is arranged such that current supply to capacitors to keep display over one frame period is carried out by connecting one electrode thereof to an output terminal of the switching transistors while connecting the other electrode thereof to either a common voltage line exclusively used for the capacitors or a current supply line that supplies current to an OLED.

[0014] FIG. 8 is a block diagram to show one example of the prior OLED display module while FIG. 9 is an explana-

tory view to show the pixel arrangement of the module as shown in **FIG. 8**. This display module **1** (image display module) is arranged on a substrate **6** made from such insulating material as glass such that a data driving circuit **3**, a gate driving circuit **4** and a current supply circuit **5** are disposed in the surrounding of a display section **2** as surrounded by the dotted line in the drawing, in which section the plurality of data lines **7** and the plurality of gate lines **8** are aligned in a matrix.

[0015] The data driving circuit **3** includes a complementary circuit of an NP-channels TFT or a shift register circuit, a level shifter circuit and an analog switch circuit comprising a single (N or P) channel TFT. To note, the current supply circuit **5** may be modified into just a bus line while the current may be supplied from an external current supply source.

[0016] **FIG. 8** shows a system in which a common voltage line **9** designed for the capacitors is provided in the display section **2**, to which common voltage line **9** the other electrodes of the capacitors are connected. The common voltage line **9** is led out to an external common voltage source from a terminal **11** of a common voltage supply bus line **9A**.

[0017] As shown in **FIG. 9**, a pixel **20** comprises a TFT **21** or a switching transistor, a TFT **22** or a driver transistor, a capacitor **23** and an OLED **24**, which are disposed in the region surrounded by the data line **7** and the gate line **8**. The gate of the TFT **21** is connected to the gate line **8** while the drain thereof is connected to the data line **7**. The gate of the TFT **22** is connected to a source of the TFT **21**, to which source one electrode (positive pole) of the capacitor **23** is connected.

[0018] The drain of the TFT **22** is connected to a current supply line **10** while the source thereof is connected to the organic light emitting diode OLED **24**. The other electrode (negative pole) of the capacitor **23** is connected to the common voltage line **9**. The data line **7** is driven by the data driving circuit **3** while the scanning line (or gate line) **8** is driven by the gate driving circuit **4**. A current supply line **10** is connected through the current supply bus line **10A** to the current supply circuit as shown in **FIG. 1**.

[0019] In **FIG. 9**, when the TFT **21** is put into on-state condition upon the selection of one pixel **20** by the gate line **8**, a video signal supplied from the data line **7** is stored in the capacitor **23**. Then, when the TFT **21** is put into off-state condition, the TFT **22** turns into on-state condition so that the current flows from the current supply line **10** to the OLED **24**, which current keeps intact practically over one frame period. The current in conduction at this time is regulated by a signal charge stored in the capacitor **23**.

[0020] The operation level of the capacitor **23** is regulated by the electric potential of the common voltage line **9**, which controls the light emitting behavior of the pixel.

[0021] The above system requires the provision of the common voltage line **9** that gets through a portion of the pixel region, which causes the deterioration of a so-called aperture ratio and constraints the displaying brightness of the module on the whole from improving.

[0022] **FIG. 10** is a block diagram to show another example of the prior OLED display module in the similar arrangement to that as shown in **FIG. 9**. The basic alignment

of the TFT **21** and TFT **22** and the capacitor **23** comprising the respective pixels is the same as shown in **FIG. 9**, the difference with which lies in the fact that the other end of the capacitor **23** is connected to the current supply line **10**.

[0023] That is, when the TFT **21** is put into on-state condition upon the selection of one pixel **20** by the gate line **8**, a video signal supplied from the data line **7** is stored in the capacitor **23**, and when the TFT **22** turns into on-state condition while the TFT **21** is put into off-state condition, the current flows from the current supply line **10** to the OLED **24**, which current keeps intact practically over one frame period in the same way as the example shown in **FIG. 9**. The current in conduction at this time is regulated by a signal charge stored in the capacitor **23**, and the operation level of the capacitor **23** is regulated by the electric potential of the current supply line **10**, which controls the light emitting behavior of the pixel.

[0024] In the above prior example, there is likelihood that not only dot defect but also vertical and horizontal line defect might occur, when short circuit is caused in the upper and lower electrodes of the capacitor **23** so as to cause large electric current owing to the fact that the current supply line connected to the capacitor **23** is situated at a high-voltage side of the substrate.

[0025] The present invention is to provide a display module incorporating such an electrooptic device as the OLED therein, the arrangement of which module allows the aperture ratio of the pixels to improve and to prevent such display fault as line defect so as to display image with high quality as well as avoids the increase of the number of production process thereof.

[0026] In order to achieve this purpose, an active matrix display module is provided herein wherein the plurality of scanning lines and the plurality of the data lines are aligned in a matrix, which module comprises a pixel in respective intersections between said scanning lines and data lines and a current supply line that supplies electric current to the pixels for display, wherein said pixel comprises an active device that is selected by the scanning line, a data storage device that stores a data signal that is supplied from the data line when the active device is put into on-state condition and an emitting device that emits light by the electric current supplied from the current supply line according to the data signal as stored in the data storage device, wherein a reference voltage of the data storage device for driving the emitting device over a fixed period is a voltage of the scanning line placed immediately anterior to the pixel that is being selected.

[0027] This arrangement allows the aperture ratio of the pixels to improve and image to be displayed with high quality as well as avoids the increase of the number of the production steps thereof so as to reduce the production cost. The more concrete arrangements of the display module according to the present invention are described below.

[0028] (1) The display module of the present invention comprises a pixel disposed in the respective intersections between the plurality of scanning lines and the plurality of data lines, which lines are aligned in a matrix, and a current supply line that supplies the electric current to the pixels, wherein said pixel comprises a pixel circuit provided with a first active

device and a second active device as well as a data signal storage device, a pixel electrode in which an emission and non-emission of the pixel is controlled by a signal output by the pixel circuit and a common electrode, wherein an output terminal of the first active device is connected to an input terminal of the second active device and one terminal of the data signal storage device is connected to a point where the output terminal of the first active device and the input terminal of the second active device connect, wherein the first active device is switched into one of on-state and off-state condition by a gate signal supplied from the scanning line wherein in the on-state condition thereof a data signal supplied from the data line is stored in the data signal storage device, wherein the second active device in the off-state condition of the first active device supplies electric current from the current supply line to the pixel electrode according to the data signal stored in the data signal storage device, wherein the other terminal of the data signal storage device is connected to a scanning line, to which the gate signal of the pixel electrode scanned anterior to the scanning line to switch the first active device is supplied.

[0029] (2) In the arrangement (1), the current supply lines are provided in parallel with the data lines.

[0030] (3) In the arrangement of either (1) or (2), the first and second active devices are thin film transistors and the data signal storage device is a capacitor.

[0031] (4) In any one of the arrangements (1) to (3), the gate driving circuit that supplies gate signals to the plurality of scanning lines, the data driving circuit that supplies data signals to the plurality of data lines and the current supply circuit that supplies electric current to the current supply lines are provided in the substrate in which the scanning lines, the data lines and the current supply lines are provided.

[0032] (5) In any one of the arrangements (1) to (4), an emitting layer interposes between the pixel electrode and the common electrode comprising the pixel.

[0033] (6) In the arrangement (5), the emitting layer is an organic emitting layer.

[0034] It should be appreciated that the present invention is not limited to the above arrangements and the embodiments as described below, but it can be modified into various manners within the scope of the accompanying patent claims. The other objects and arrangements of the present invention are clarified from the following description.

BRIEF DESCRIPTION OF THE DRAWINGS

[0035] FIG. 1 is a block diagram to show the arrangement of the first embodiment of the display module according to the present invention.

[0036] FIG. 2 is a circuit view to show the detailed arrangement of one pixel of the module as shown in FIG. 1.

[0037] FIG. 3 is a plan view in the vicinity of one pixel to show one example of the display module according to the present invention.

[0038] FIG. 4 is a plan view in the vicinity of one pixel to show another example of the display module according to the present invention.

[0039] FIG. 5 is a view to show the formation step of the respective structural layers of the display module as shown in FIG. 3.

[0040] FIG. 6 is a view to show the formation step of the respective structural layers of the display module as shown in FIG. 3 following the step as shown in FIG. 5.

[0041] FIG. 7 is a view to show the formation step of the respective structural layers of the display module as shown in FIG. 3 following the step as shown in FIG. 6.

[0042] FIG. 8 is a block diagram to show the arrangement of one example of the prior OLED display module.

[0043] FIG. 9 is a view to show the pixels arrangement of the display module as shown in FIG. 8.

[0044] FIG. 10 is a block diagram like FIG. 9 to show the arrangement of another example of the prior OLED display module.

BRIEF DESCRIPTION OF THE PREFERRED EMBODIMENT

[0045] Hereinafter, the preferred embodiments of the present invention are described in details with reference to the accompanying drawings. The organic emitting layer of the respective pixels as described below is divided into such types as emitting light with luminance in proportion to the value of the current and with a color (including white) inherent in an organic material in use and incorporating a red, green, blue or other color filter into the organic layer to emit white light so as to display color image.

[0046] FIG. 1 is a block diagram to show the arrangement of the first embodiment of the display module according to the present invention while FIG. 2 is a circuit view to show the detailed arrangement of one pixel of the module as shown in FIG. 1. In the present embodiment, in the same way as shown in FIG. 10, data lines 7, scanning lines 8 and current supply lines 10 are provided in the display region 2. In the drawings, the scanning lines 8 are represented with 8 (n+1), 8 (n) placed anterior thereto and 8 (n-1) placed farther anterior thereto while the data lines 7 are represented with 7 (m+1), 7(m) and 7 (m-1).

[0047] For the sake of conveniences, the scanning line as being scanned (or selected) is regarded as the 8 (n+1) in the following description. Attention is paid to the Pixel 20 among the plurality of pixels as selected by the scanning line 8 (n+1). The first TFT 21 and the second TFT 22 that are active devices are a switching transistor and a driver transistor respectively. The gate of the first TFT 21 is connected to the scanning line 8 (n+1) and the drain thereof is connected to the data line 7 (m+1) while the source thereof is connected to the gate of the second TFT 22.

[0048] The drain of the second TFT 22 is connected through a current supply line 10A to a current supply line 10. The source thereof is connected to an anode of an OLED 24. One terminal of a capacitor 23 for a data signal storage device is connected to a point where the source of the first TFT 21 and the gate of the second TFT 22 connect while the

other terminal thereof is connected to the scanning line **8** (n) placed anterior to the **8** (n+1).

[0049] In the circuit arrangement of one pixel as shown in **FIG. 2**, one terminal of the capacitor **23** that is connected to the point where the source of the first TFT **21** and the gate of the second TFT **22** connect is of positive pole while the other terminal thereof as connected to the scanning line **8** (n) is of negative pole. The OLED **24** is arranged such that an organic emitting layer, which is not shown in the drawings, interposes between the anode **25** and the cathode **26** thereof, the anode **25** being connected to the source of the second TFT **22** and the cathode **26** being connected to an electrode provided on the side of the same and comprising the pixel, which electrode is not shown in the drawings.

[0050] In the above arrangement, the driving operation of the respective pixels for display, which pixels are in connection with the prior scanning line **8** (n), is over wherein the TFTs (the first TFTs) thereof are on off-state condition over most of the one frame (or one field) period. That is, the electric potential of the scanning line **8** (n) is on a given low voltage state, which state does not fluctuate during most of the one frame (or field) period.

[0051] Thus, the capacitor **23** of the pixel in connection with the scanning line **8** (n+1) as being scanned stably stores a data signal as written therein from the data line **7** (m+1), which allows the electric current that conducts into the OLED **24** through the second TFT **22** from the current supply line **10** to correctly correspond to the data signal as stored in the capacitor. This also applies to all the pixels that are in connection with the scanning line **8** (n+1).

[0052] The arrangement hereof allows the voltage of the capacitor **23** for the data signal storage device to keep intact, so that there is no case where the reference voltage of the capacitor fluctuates owing to the inflow of the electric current into the OLED that occurs in the prior display module as shown in **FIG. 10**, with the result that there is no fluctuation of the light emitting quantity of the OLED, which allows image to be displayed with high quality. Further, the riddance of the common voltage line of the display module as shown in **FIG. 8** or **9** improves the aperture ratio of the pixel and avoids the increase of the number of the production steps thereof, which brings the production cost thereof to reduction.

[0053] Then, the arrangement of the display module according to the present invention is more concretely described below.

[0054] The data signal (image signal etc.) may be supplied to the data line in analog or time sharing digital quantity, and the system in which the area of the respective pixels is divided may be incorporated. Normally, the pixel circuit is produced by the low temperature polysilicone TFT technique. In this case, it is preferred that the electrodes comprising the capacitor utilize a layer of the channel and gate portions of the transistor. The channel portion thereof is spaced apart from the gate portion thereof by a thin insulating layer, which allows an area for securing the capacitance as required to be rendered narrower.

[0055] **FIGS. 3 and 4** show a plane view of the vicinity of one pixel of the display module according to the present invention. In the drawings, reference numerals **7**, **8** (n) and **8** (n+1), and **10** indicate a data line, scanning lines, and a

current supply line respectively. One pixel is surrounded by the scanning lines **8** (n) and **8** (n+1) and the current supply line **10**, in which the first TFT **21**, the second TFT **22**, the capacitor **23**, the anode **25** of the OLED as indicated with the dotted line, a contact hole **27** for connecting the data line **7**, the scanning lines **8** (n) and **8** (n+1) as well as the current supply line **10** to the respective TFTs and the capacitor **23**, an aperture **28** to receive an organic emitting layer therein are included.

[0056] The pixel circuit is surrounded by the current supply line **10** to the OLEDs, which line is disposed vertically with regard to the drawings in the same direction as the data line **7** to supply image signal and as such, and the gate lines **8**(n) and **8**(n+1) as disposed horizontally with regard thereto. The switching transistor for the first TFT **21** writes the data signal supplied from the data line into the capacitor **23** of the pixel circuit.

[0057] The dual gate system is adopted for the first TFT **21** in order to abate the decrease of the storage charge of the capacitor **23** owing to leaking current. The driver transistor for the second TFT **22** is disposed in folds in order to obtain a comparatively large gate length. The capacitor **23** is disposed under the wiring system in order to reduce the affect of the pixel upon the aperture **28**. The other pole (the other terminal) of the capacitor **23** is electrically connected to the gate line that is scanned anterior to that being scanned.

[0058] There are two methods for the connection thereof to the prior gate line according to which electrode (terminal) of the capacitor **23** is connected thereto. **FIG. 3** shows the case where the lower electrode thereof is connected thereto while **FIG. 4** shows the case where the upper electrode thereof is connected thereto.

[0059] Generally, it is required to make either of the electrode thereof conductive for the purpose of forming a capacitor by overlaying two electrodes one over another. The lower electrode thereof is made from the same material as that for the channel portion of the transistor, so that it is basically required to perform doping operation on the whole surface thereof by such method as ion implantation for the purpose of making the whole surface thereof conductive. Such conductive material as metal is normally adopted for the upper electrode thereof.

[0060] The ion implantation onto the whole surface of the lower electrode thereof should be performed before the formation of the upper electrode thereof, which is not desirable because it increases the number of production process. The polarity of the electrodes thereof is taken into considerations in the present embodiment in order to dispense with the ion implantation for rendering the whole surface of the lower electrode thereof conductive. It is known that the movement of carrier occurs without performing the ion implantation on the whole surface thereof so as to serve as a capacitor, presuming that where the n-type ion doping is performed is a low-tension side while where p-type ion doping is performed is a high-tension side. Accordingly, the ion implantation is not performed on the whole surface thereof, which is performed after the formation of the upper electrode thereof in this embodiment.

[0061] Provided that the first TFT **21** for the switching transistor is of n-type transistor, the voltage applied to the gate line is on low voltage or off-state condition during most

of the frame period and turns into on-state condition only during the writing operation of the data signal. In this case, it is preferable that where the lower electrode thereof is connected to the prior gate line, the n-type ion implantation is performed while the p-type ion implantation is performed where the upper electrode thereof is connected thereto.

[0062] In the arrangement as shown in FIG. 3, the other terminal of the capacitor 23 of the pixel under scanning is connected through a contact hole 27 as shown therein to the prior gate line 8(n).

[0063] In the arrangement as shown in FIG. 4, the gate line 8 (n) extends over to the capacitor portion of the 8 (n+1) so as to be used as an upper electrode of the same. Thus, the switching transistor is connected to the lower electrode thereof.

[0064] FIGS. 5 through 7 show the formation steps of the respective structural layers of the display module as shown in FIG. 3, the references (A) to (I) in which drawings indicate the formation of the respective structural layers. The layers as formed by the respective steps are shown with visible outlines.

[0065] At (A) in FIG. 5, a polysilicone layer 30 for the channel portion of the transistor and the lower electrode of the capacitor is formed on a glass substrate not shown in the drawing, on which layer laser annealing or heating operation is performed for crystallization. Then, a first insulating layer is formed of p-TEOS and as such on the annealed or heated layer.

[0066] At (B) in FIG. 5, a conductive layer 80 for the scanning lines, the gate of the transistor and the upper electrode of the capacitor is formed of titanium Ti or tungsten W and as such. The n-type ion implantation is performed thereon by using the upper electrode thereof as a mask layout.

[0067] At (C) in FIG. 5, a second insulating layer is formed H o on the conductive layer 80, on the required portions of which layer contact holes 270 are made by means of the wet etching method and so forth.

[0068] At (D) in FIG. 6, the drain of the transistor and the current supply line are formed with an aluminum wiring 70, the upper and lower sides of which wiring may be sandwiched with titanium Ti or tungsten W and as such.

[0069] At (E) in FIG. 6, a third insulating layer is formed on the aluminum wiring so as to form a contact hole 271 for an anode.

[0070] At (F) in FIG. 6, ITO is coated thereon for an anode of the OLED, on which patterning is performed so as to form an anode 25.

[0071] At (G) in FIG. 7, a passivation film is coated on the anode 25, through which file a hole is made so as to provide an aperture 28 for receiving an organic emitting layer, which aperture corresponds to the emitting region of the module.

[0072] At (H) in FIG. 7, an organic emitting layer 260 is coated on the aperture 28, which layer is coated on the region of the aperture including the circumferential edge thereof. For color display, an organic emitting layer to emit a given color light is coated on the aperture of the respective pixels.

[0073] At (I) in FIG. 7, a cathode 26 to cover the organic emitting layer 260 is formed so as to obtain a basic panel substrate. Thereafter, this panel substrate is sealed by an appropriate sealing structure so as to be put into a module form. Through the above production steps, the display module embodied in the present invention is obtained.

[0074] It should be noted that the present invention is not limited to the OLED display module, but is also applicable to another display module that emits light in the similar manner to the OLED module.

[0075] As described above, according to the present invention, the occurrence of line defects resulting from the short-circuit between the electrodes of the capacitor is prevented and the increase of the number of production process is avoided, so that the display module, the aperture ratio of the respective pixels of which module is improved so as to allow image to be displayed with high luminance and quality, is provided.

What is claimed is:

1. Display module comprising a pixel disposed in respective intersections between a plurality of scanning lines and a plurality of data lines, which lines are aligned in a matrix, and a current supply line that supplies electric current to said pixel,

wherein said pixel comprises an active device that is selected by said scanning line, a data storage device that stores a data signal that is supplied from said data line when said active device is put into on-state condition and an emitting device that emits light by the electric current supplied by said current supply line according to the data signal stored in said data storage device, and

wherein a reference voltage of said data storage device for driving said emitting device over a given period is the voltage of the scanning line placed anterior to the pixel that is being selected.

2. Display module comprising a pixel provided with an emitting device in respective intersections between a plurality of scanning line and a plurality of data lines, which lines are aligned in a matrix and a current supply line that supplies electric current to said pixel for display,

wherein said pixel comprises a pixel circuit provided with a first active device and a second active device as well as a data signal storage device, a pixel electrode wherein emission and non-emission of said pixel are controlled by an output signal of said pixel circuit and a common electrode,

wherein an output terminal of said first active device is connected to an input terminal of said second active device, while one terminal of said data signal storage device is connected to a point where said output terminal is connected with said input terminal,

wherein said first active device is switched into one of an on-state condition and an off-state condition by a gate signal supplied from said scanning line, in which in the on-state condition a data signal supplied from said data line is stored in said data signal storage device,

wherein said second active device supplies electric current in response to the data signal stored in said data

signal storage device from said current supply line to said pixel electrode when said first active device is in off-state condition, and

wherein a second terminal of said data signal storage device is connected to the scanning line to which the gate signal of the pixel circuit, which circuit is scanned anterior to the scanning line to switch on and off said first active device, is supplied.

3. Display module according to claim 2, wherein said current supply line extends in parallel with said data line.

4. Display module according to claim 2, wherein said first and second active devices are thin film transistors and said data signal storage device is a capacitor.

5. Display module according to claim 2, wherein a gate driving circuit to supply the gate signal to the plurality of scanning lines, a data driving circuit to supply the data signal to the plurality of data lines and a current supply circuit to supply electric current to said current supply lines are provided on a substrate in which said scanning lines, data lines and current supply lines are formed.

6. Display module according to claim 2, wherein an emitting layer interposes between said pixel electrode and common electrode having said pixel.

7. Display module according to claim 2, wherein an organic emitting layer interposes between said pixel electrode and common electrode having said pixel.

* * * * *

专利名称(译)	显示模块		
公开(公告)号	US20020140644A1	公开(公告)日	2002-10-03
申请号	US10/105273	申请日	2002-03-26
[标]申请(专利权)人(译)	佐藤俊 金子YOSHIYUKI 郎三上 大内TAKAYUKI		
申请(专利权)人(译)	佐藤俊 金子YOSHIYUKI 郎三上 大内TAKAYUKI		
当前申请(专利权)人(译)	三星DISPLAY CO. , LTD.		
[标]发明人	SATO TOSHIHIRO KANEKO YOSHIYUKI MIKAMI YOSHIRO OUCHI TAKAYUKI		
发明人	SATO, TOSHIHIRO KANEKO, YOSHIYUKI MIKAMI, YOSHIRO OUCHI, TAKAYUKI		
IPC分类号	H05B33/08 G09F9/30 G09G3/20 G09G3/30 H01L27/32 H01L51/50		
CPC分类号	G09G3/3233 G09G2300/0465 G09G3/3241 G09G2300/0876 G09G2310/0262 G09G2300/0842 H01L27/3276 H01L27/3248 H01L27/3265		
优先权	2001092851 2001-03-28 JP		
其他公开文献	US6919886		
外部链接	Espacenet USPTO		

摘要(译)

提供一种有机发光二极管 (OLED) 显示模块, 其中各个像素的孔径比得到改善, 并且防止了诸如线缺陷的显示故障, 从而允许以高质量显示图像。显示模块设置有电容器, 其第一端子连接到由扫描线选择的第一晶体管的输出端子, 并且其第二端子连接到位于其前面的栅极, 其中电流是响应于从数据线通过第二晶体管提供的数据信号提供给有机发光器件, 当第一晶体管进入截止状态时, 该数据信号变为导通状态, 并存储在电容器中。

